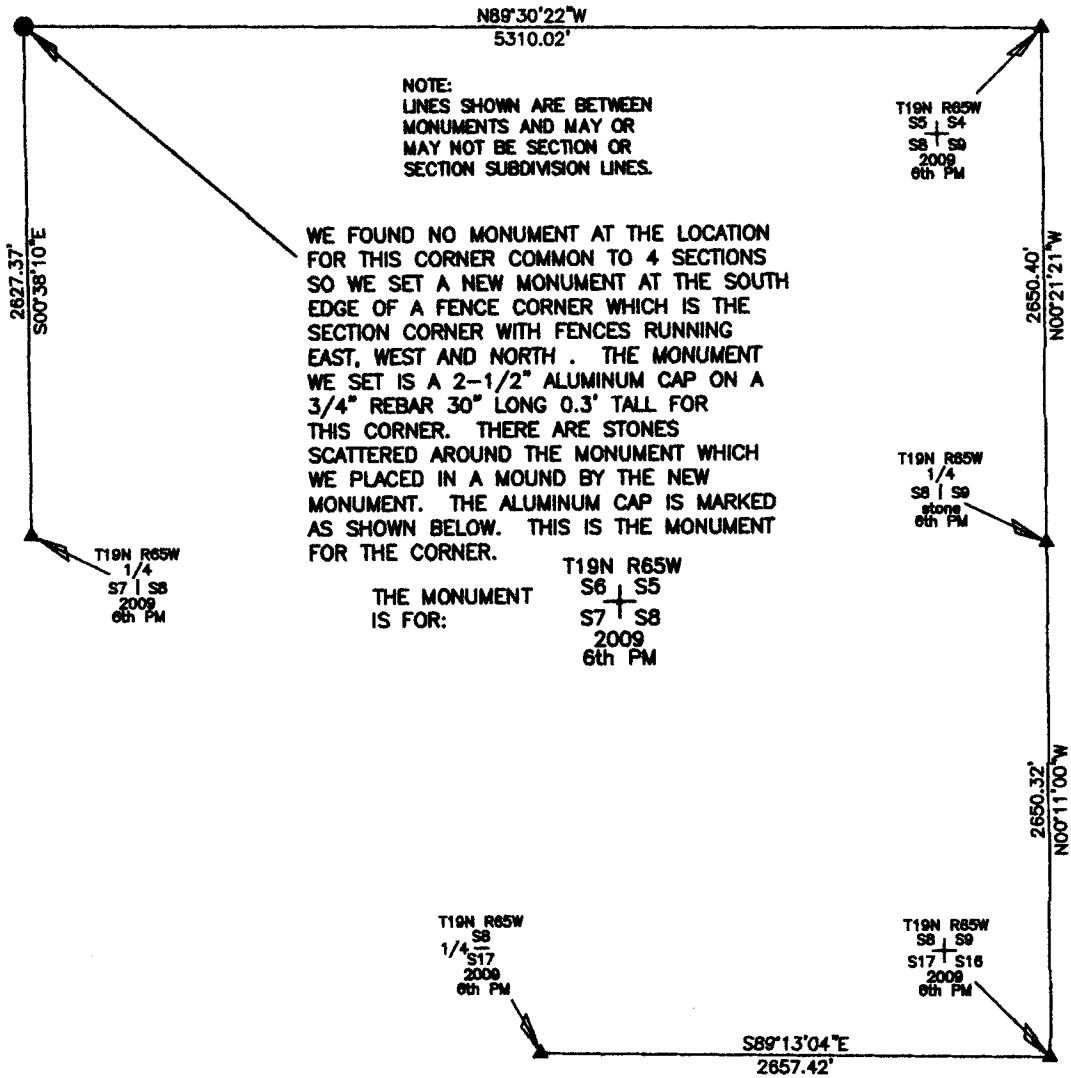


State of Wyoming Corner Record

(In compliance with the **CORNER PERPETUATION AND FILING ACT**, Wyoming Statutes, 1977, Section 36-11-101, et. seq., and the Rules and Regulations of the Board of Registration for Professional Engineers and Land Surveyors.)

Reverse side of this form may be used if more space is needed.

Record of original survey and citation of source of historic information (if corner is lost or obliterated). Description of corner monumentation evidence found and/or monument and accessories established to perpetuate the location of this corner. Sketch of relative location of monument, accessories, and reference points with course and distance to adjacent corner(s) (if determined in this survey). Method and rationale for reestablishment of lost or obliterated corner.

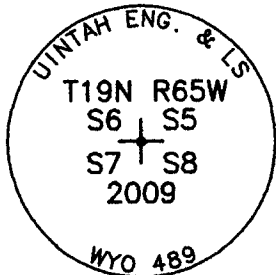


NOTE:
LINES SHOWN ARE BETWEEN MONUMENTS AND MAY OR MAY NOT BE SECTION OR SECTION SUBDIVISION LINES.

WE FOUND NO MONUMENT AT THE LOCATION FOR THIS CORNER COMMON TO 4 SECTIONS SO WE SET A NEW MONUMENT AT THE SOUTH EDGE OF A FENCE CORNER WHICH IS THE SECTION CORNER WITH FENCES RUNNING EAST, WEST AND NORTH. THE MONUMENT WE SET IS A 2-1/2" ALUMINUM CAP ON A 3/4" REBAR 30" LONG 0.3' TALL FOR THIS CORNER. THERE ARE STONES SCATTERED AROUND THE MONUMENT WHICH WE PLACED IN A MOUND BY THE NEW MONUMENT. THE ALUMINUM CAP IS MARKED AS SHOWN BELOW. THIS IS THE MONUMENT FOR THE CORNER.

THE MONUMENT IS FOR:

T19N R65W
S6 + S5
S7 + S8
2009
6th PM



CORNER MONUMENT SYMBOLS

- RECORD IS FOR THIS CORNER MONUMENT.
- ▲ A RELATED CORNER OR WC MONUMENT.

SCALE 1"=1000'
(EXCEPT IN TRIVIAL CASES)
BEARINGS ARE RELATED TO WGS 84 WITH GPS OBSERVATIONS
DRAWN BY: N.J.M.
P.C. J. FLOYD
COUNTY: LARAMIE

THE MONUMENT IS MARKED

Date of Field Work: 04/19/2009 Office Reference: _____

CROSS INDEX DIAGRAM

1 2 3 4 5 6 7 8 9 10 11 12 13 14 15 16 17 18 19 20 21 22 23 24 25																										
A																									A	
B																									B	
C	6	5	4	3	2	1																				C
D																									D	
E																									E	
F																									F	
G	7	8	9	10	11	12																				G
H																									H	
J																									J	
K																									K	
L	18	17	16	15	14	13																				L
M																									M	
N																									N	
O																									O	
P	19	20	21	22	23	24																				P
Q																									Q	
R																									R	
S																									S	
T	30	29	28	27	26	25																				T
U																									U	
V																									V	
W																									W	
X	31	32	33	34	35	36																				X
Y																									Y	
Z																									Z	
1 2 3 4 5 6 7 8 9 10 11 12 13 14 15 16 17 18 19 20 21 22 23 24 25																										

Firm/Agency, Address

UELS, LLC

85 South 200 East

Vernal, Utah 84078

Telephone Number: 435-789-1017

This corner record was prepared by me or under my direction and supervision.

SEAL & SIGNATURE



RECORDED 6/22/2009 AT 12:06 PM REC# 525079 3# 2118 PG# 877
DEBRA K. LATHROP, CLERK OF LARAMIE COUNTY, WY PAGE 1 OF 1